

Monthly Operations Report for May 2025 at KLUK

Operations

	May 2025	May 2024	Year over Year Change
TRANSITION	28	0	-
TOUCH & GO	65	0	-
TAKEOFF	242	0	-
LANDING	222	0	-
GO AROUND	9	0	-
Totals	612	0	-

NOTE: FLYOVER and TRANSITION are excluded from the total operations count. Operations classified as TOUCH & GO and GO AROUND are counted as two distinct operations, a landing and a takeoff respectively.

Aircraft Type

	May 2025	May 2024	Year over Year Change
Fixed wing single engine	576	0	-
Fixed wing multi engine	21	0	-
Unknown	15	0	-

Engine Type

Turbo-prop	6	0	-
Reciprocating	563	0	-
4 Cycle	28	0	-
Unknown	15	0	-

Number of Engines

1	576	0	-
2	21	0	-
Unknown	15	0	-

Average Daily Operations

Monday	7	0	-
Tuesday	18	0	-
Wednesday	20	0	-
Thursday	37	0	-
Friday	21	0	-
Saturday	28	0	-
Sunday	19	0	-
Average per weekday	21	0	-
Average per weekend	24	0	-

Local vs. Transient

Monthly Operations Report for May 2025 at KLUK

Operations			
	May 2025	May 2024	Year over Year Change
Local	0	0	0.0%
Transient	612	0	0.0%
Nights Stayed	51	0	-
Seats on Overnight Aircraft	202	0	-
Overnight Visitors @ 50%	101	0	0.0%
Runways			
RWY 09 GO AROUNDs	4	0	-
RWY 09 LANDINGS	59	0	-
RWY 09 TAKEOFFs	69	0	-
RWY 09 TOUCH & GOs	36	0	-
RWY 09 Total	168	0	-
RWY 27 GO AROUNDs	14	0	-
RWY 27 LANDINGS	163	0	-
RWY 27 TAKEOFFs	173	0	-
RWY 27 TOUCH & GOs	94	0	-
RWY 27 Total	444	0	-

Monthly Operations Report for May 2025 at KLUK

	Jan 2024	Jan 2023	Year over Year Change
Weight Class			
CLASS 1	592	0	-
CLASS 2	5	0	-
Unknown	15	0	-
Jet Traffic			
Operations	0	0	-
Largest aircraft			
Average seat count per jet	0	0	-

Most Active Aircraft

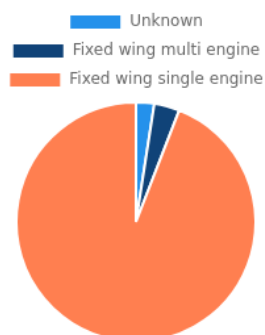
Registration	Manufacturer	Model	Operations	Percentage of Total
N8478U	CESSNA	172F	251	61.7%
N323FS	CESSNA	172P	164	40.3%
N3771R	CESSNA	172H	18	4.4%
N818T	CESSNA	152	15	3.7%

Most Active Aircraft				
Registration	Manufacturer	Model	Operations	Percentage of Total
N7497T	CESSNA	172A	13	3.2%
N799TE	CESSNA	310P	12	2.9%
N1935T	PIPER	PA-28-180	6	1.5%
N94TB	VANS AIRCRAFT	RV-6	6	1.5%
			6	1.5%
N22334	BEECH	E-55	5	1.2%

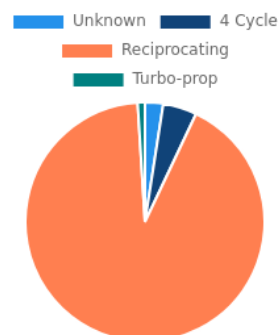
Most Active Owners		
Name	Operations	City
RED OAK AVIATION LLC	233	MINERAL
FREDERICKS HALL AVIATION LLC	169	MINERAL
MCCAY BRIAN D	18	EARLYSVILLE
REGISTRATION PENDING	18	TROY
NAPIER LEVI	15	WILLIS
LEFFLER GREG L	13	ZION CROSSROADS
EASTER JOHN E II	12	BREMO BLUFF
MARTIN ROBERT L III	6	COVESVILLE
WEBBOE INVESTMENTS LLC	6	FALLS CHURCH
CIVIL AIR PATROL	5	MAXWELL AFB

Owner Locations		
City	Operations	Percentage of total
MINERAL	345	84.8%
TROY	18	4.4%
EARLYSVILLE	16	3.9%
Unknown	15	3.7%
WILLIS	13	3.2%

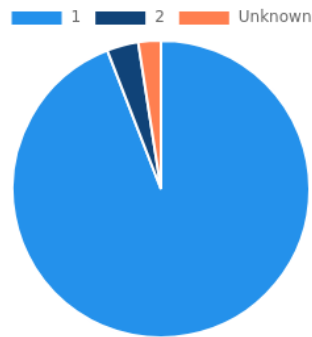
Aircraft Type



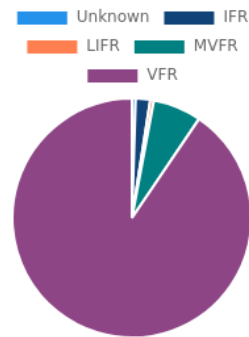
Engine Type



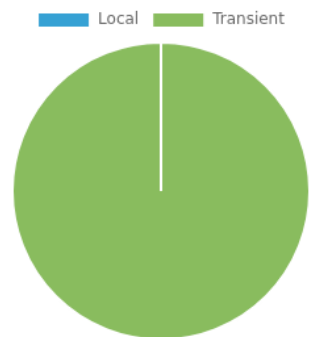
Number of Engines



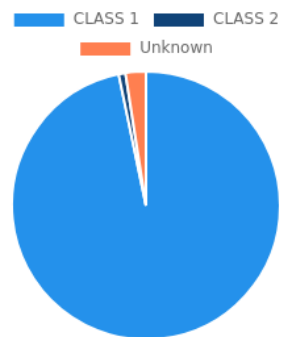
Weather



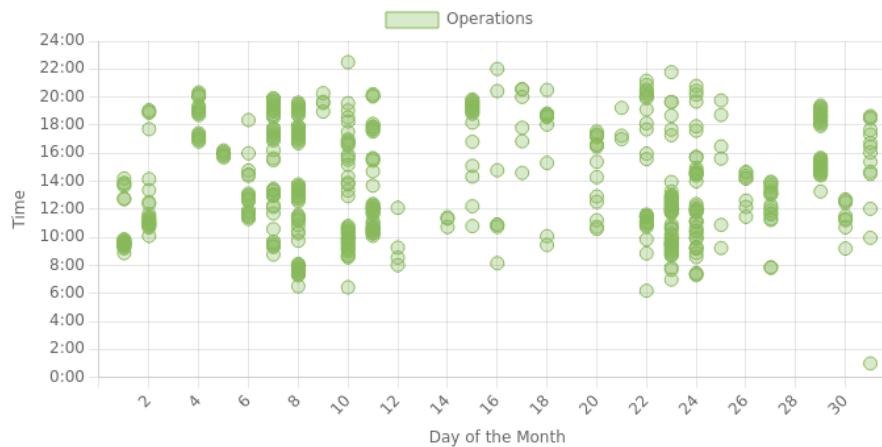
Local/Transient



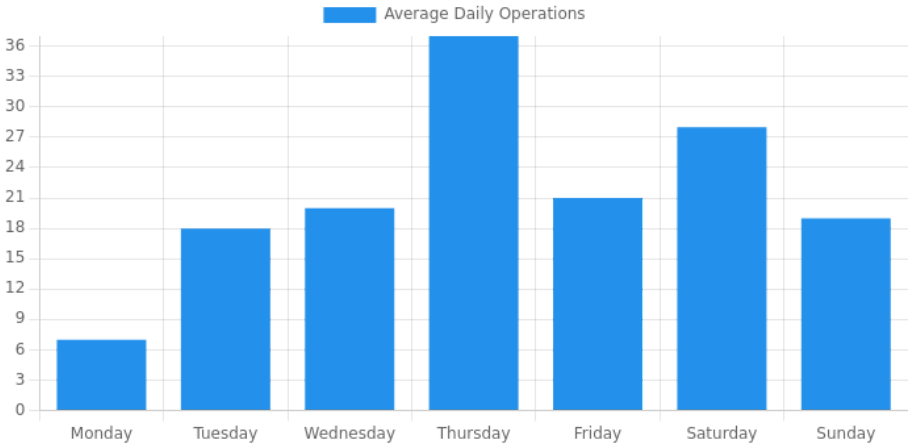
Weight Class



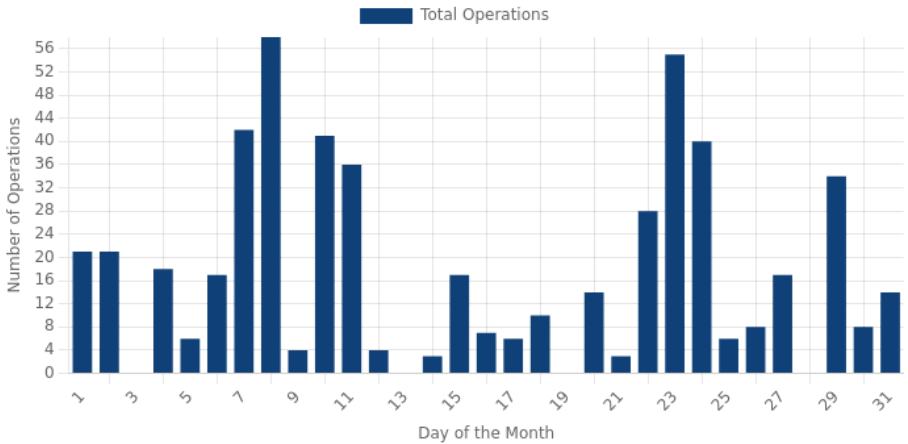
Time of Day



Day of the Week



Daily Operations



Operations by AAC/ADG						
	I	II	III	IV	V	VI
A	596	0	0	0	0	0
B	1	0	0	0	0	0
C	0	0	0	0	0	0
D	0	0	0	0	0	0
E	0	0	0	0	0	0

AAC/ADG Distribution

